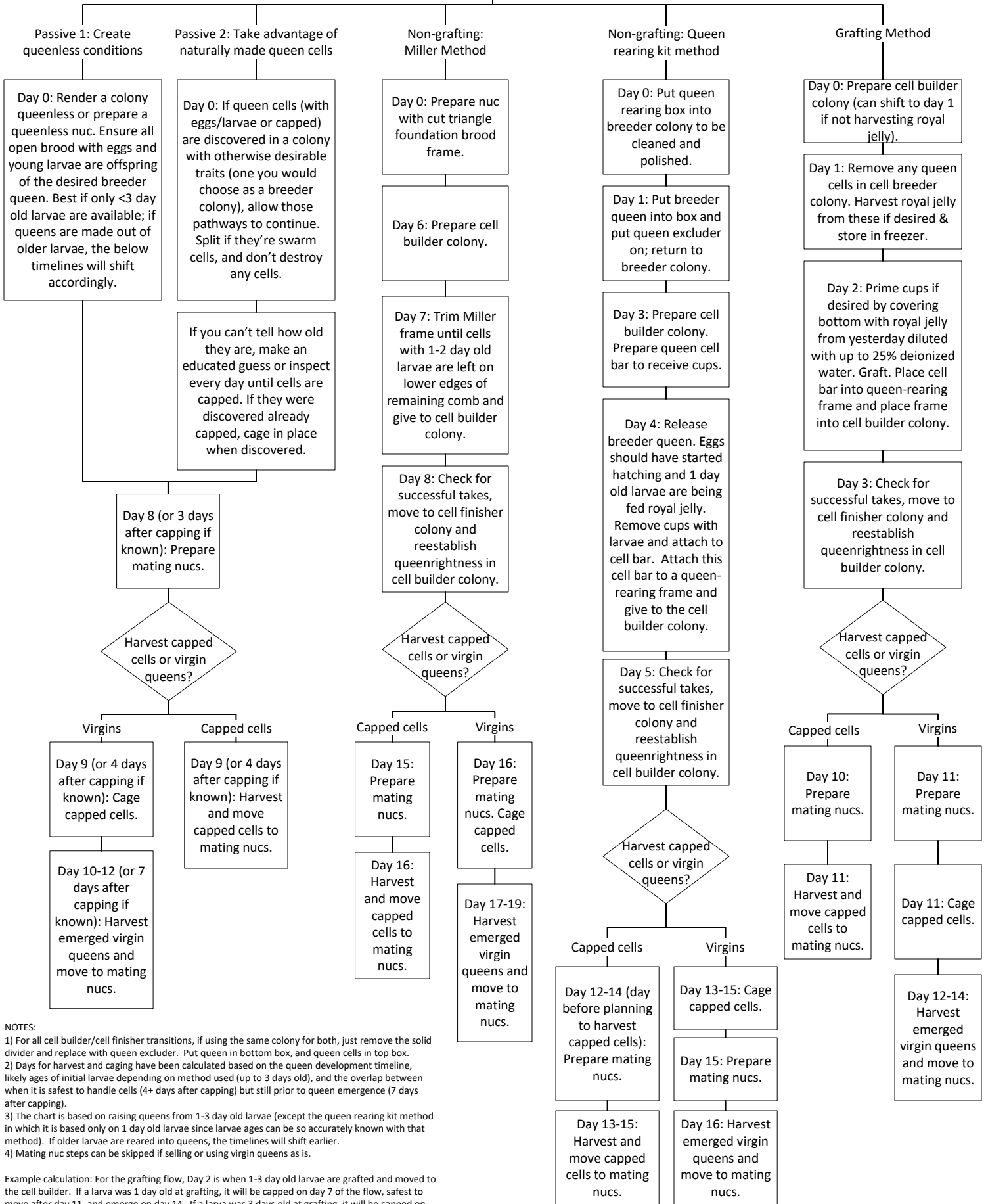


Select breeder colony. Choose queen rearing method.



NOTES:  
 1) For all cell builder/cell finisher transitions, if using the same colony for both, just remove the solid divider and replace with queen excluder. Put queen in bottom box, and queen cells in top box.  
 2) Days for harvest and caging have been calculated based on the queen development timeline, likely ages of initial larvae depending on method used (up to 3 days old), and the overlap between when it is safest to handle cells (4+ days after capping) but still prior to queen emergence (7 days after capping).  
 3) The chart is based on raising queens from 1-3 day old larvae (except the queen rearing kit method in which it is based only on 1 day old larvae since larvae ages can be so accurately known with that method). If older larvae are reared into queens, the timelines will shift earlier.  
 4) Mating nuc steps can be skipped if selling or using virgin queens as is.

Example calculation: For the grafting flow, Day 2 is when 1-3 day old larvae are grafted and moved to the cell builder. If a larva was 1 day old at grafting, it will be capped on day 7 of the flow, safest to move after day 11, and emerge on day 14. If a larva was 3 days old at grafting, it will be capped on day 5 of the flow, safest to move after day 9, and emerge on day 12. The best day to move/cage is thus day 11 since it is the day that overlaps for all larvae ages (1-3 days old), and queens will emerge between days 12-14 depending on initial ages of grafted larvae.